

# MODULE FACTORY

## FACTORIES, WAREHOUSES, WORKSHOPS

**No gluing is required**

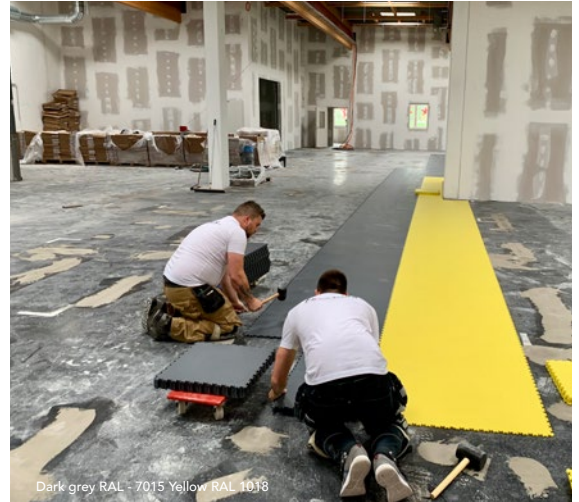
(And this even in areas with constant truck traffic of several tons\*).

Can cover uneven, damp and dusty floors.

**100%  
RECYCLABLE**



Light grey RAL 7045



Dark grey RAL - 7015 Yellow RAL 1018

**No disruption to your daily operations** and no dust.

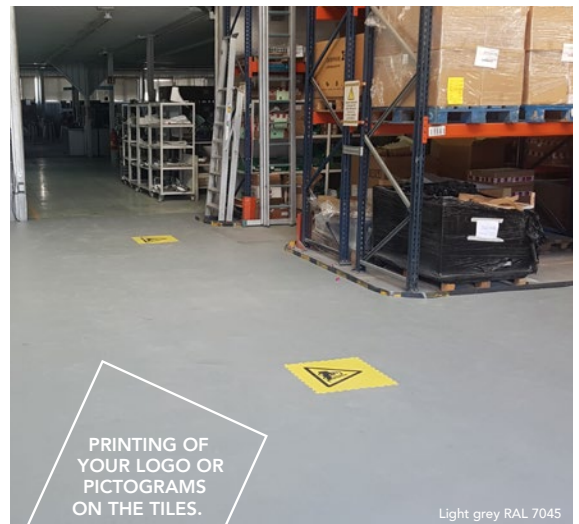


Light grey RAL 7045



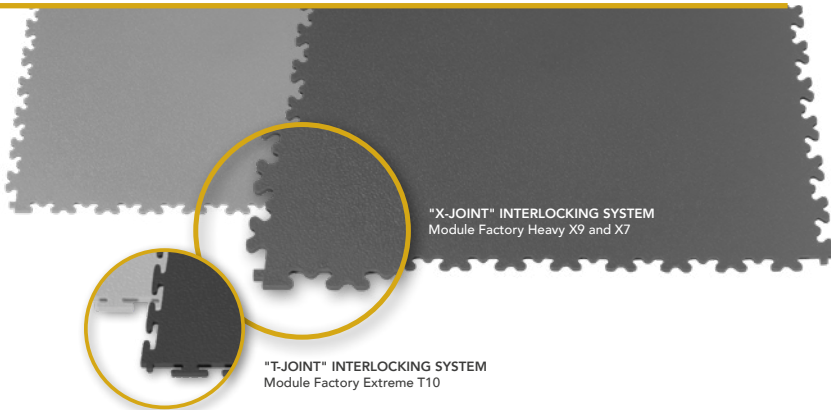
Light grey RAL 7045

**Slip resistance R10.**



PRINTING OF  
YOUR LOGO OR  
PICTOGRAMS  
ON THE TILES.

Light grey RAL 7045



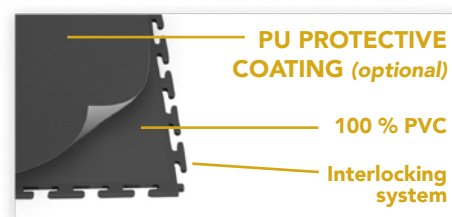
"X-JOINT" INTERLOCKING SYSTEM  
Module Factory Heavy X9 and X7

"T-JOINT" INTERLOCKING SYSTEM  
Module Factory Extreme T10

# VERY GOOD MECHANICAL AND CHEMICAL RESISTANCE

**MECHANICAL** : a reinforced PVC designed for areas where fork trucks, pallet trucks and storage units are in constant use (abrasion class T).

**CHEMICAL** : as an option, the PU protective coating will protect coloured tiles against chemicals.



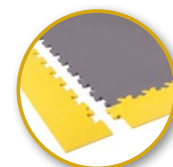
## A RANGE OF VERY RESISTANT PVC INDUSTRIAL FLOORING DESIGNED BY AND FOR THE INDUSTRY!

Description	Module Factory Extreme T10	Module Factory Heavy X9 and X7		Module Factory AS and ESD	
<b>Thickness and hardness</b>	10 mm Shore D 57 (hardened PVC)	9 mm and 7 mm Shore D 57 (hardened PVC)		5mm (AS only) and 7mm Shore A 92 (standard hardness)	
<b>Interlocking system</b>	T-joint	X-joint		X-joint	
<b>Dimensions (mm)</b>	500 x 500	500 x 500		500 x 500	
<b>Article code</b>	MFAC10	MFAC9 / MFAC7		MFAC5AS / MFAC7AS / MFAC7ESD	
<b>Maximum resistance *</b> <i>(rubber wheels and PU only)</i>		<b>X9</b>	<b>X7</b>	<b>X7 (AS and ESD)</b>	<b>X5 (AS only)</b>
4-wheel forklift :	up to 7 t.	up to 6.5 t.	up to 4.5 t.	up to 2.5 t.	up to 2 t.
3-wheel forklift :	up to 4.5 t.	up to 3.5 t.	up to 2 t.	up to 1.5 t.	complete gluing
Retractable mast fork lift truck :	up to 4.5 t.	complete gluing	complete gluing	complete gluing	complete gluing
Manual pallet truck :	up to 3 t.	up to 2 t.	up to 2 t.	up to 1.5 t.	up to 0.5 t.
Electric pallet truck :	up to 2 t.	up to 2 t.	up to 1,5 t.	up to 1 t.	complete gluing
<b>Finish</b>	Textured (waffle back)	Textured (smooth back)		Textured (smooth back)	
<b>Tiles and Weight per m<sup>2</sup></b>	4 tiles / 14 kgs	X9 = 4 tiles / 12 kgs	X7 = 4 t. / 9.5 kgs	4 tiles / 8 kgs	
<b>Pack size / box m<sup>2</sup></b> Delivery within 10 working days, contact us for orders > 300 m <sup>2</sup>	6 tiles / box (1.5 m <sup>2</sup> )	X9 = 6 t. / b. (1.5 m <sup>2</sup> )	X7 = 8 t. / b. (2 m <sup>2</sup> )	10 tiles / b. (2 m <sup>2</sup> )	

Available in Shore A and D



Only available in Shore A (standard hardness)



Ramps and angles available in all colors.  
(Packaging: Bag of 4 simple ramps OR Bag of 4 angle ramps)

Technical datasheet	Standards	Module Factory Extreme T10	Module Factory Heavy X9 and X7	Module Factory AS and ESD	
<b>Abrasion</b>	EN 660-2	Group T	Group P	Group P	
<b>Castor wheel</b>	EN 425	No damage	No damage	No damage	
<b>Indentation</b>	EN 433	< 0,10 mm	< 0,10 mm	< 0,10 mm	
<b>Fire class</b>	EN 13501-1	B <sub>f1</sub> -S1 : very good fire resistance	B <sub>f1</sub> -S1 : very good fire resistance	B <sub>f1</sub> -S1 : very good fire resistance	
<b>Electrical resistance</b>	EN 1081	≤10 <sup>12</sup> Ω	≤10 <sup>12</sup> Ω	AS: 10 <sup>9</sup> Ω	ESD: 10 <sup>6</sup> Ω
<b>Slip Resistance (Europe)</b>	EN13893	Anti slip DS	Anti slip DS	Anti slip DS	
<b>Slip Resistance (Germany)</b>	DIN 51130	R10	R10	R10	
<b>Light Fastness</b>	EN 20105	7BWS / 5GSR : excellent (>100 years)			
<b>CSTB classification</b>	P/MC	x	P/M 4.2.1.4 - P/C 3.3.3.2.3.0.0.3.3	x	



\* Indicative and non-contractual maximum resistance. Each environment requires a free diagnosis from Module Floors and gluing tiles might be required. Mandatory gluing in case of contact with the sun or temperatures <0°C et >20°C. 2K PU glue available on request. 2K PU glue available on request.

