

# MODULE BOARD

## STOCKAGES, ENTREPÔTS AGRICOLES

Designed for heavy-duty applications  
cars, trucks and machinery.  
Easy to install and remove.



≈ 100%  
RECYCLED  
100% RECYCLABLE



Interlocking tiles protect and stabilize floors temporarily or permanently.



Interlocking ramps  
Length : 51 cm  
Male and female locking

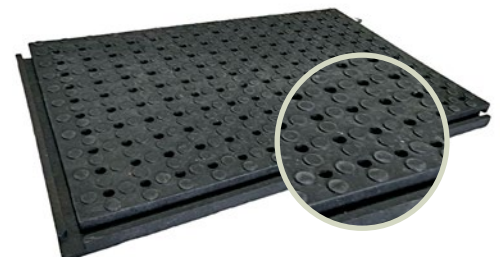
MODULE BOARD X27mm



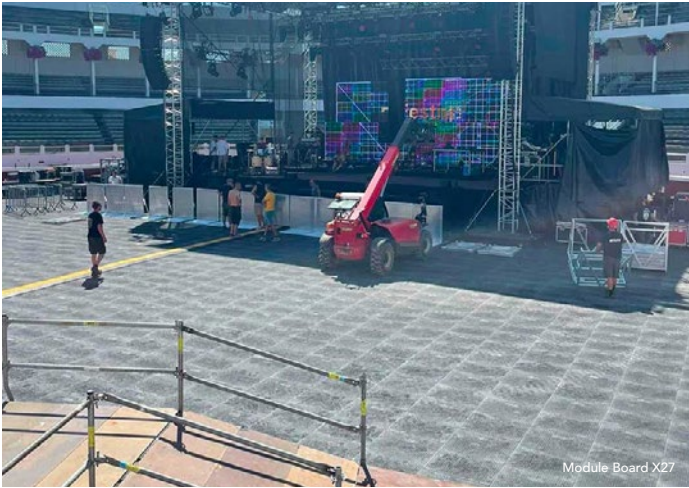
MODULE BOARD X40mm



MODULE BOARD DRAINAGE



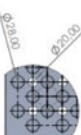


# DRAIN AND STABILIZATION TILES



**HEAVY DUTY  
FLEXIBLE FLOOR**  
**100% RECYCLED PVC**  
**MADE IN FRANCE**



Module Board is a heavy duty portable flooring solution. It is a hard wearing tile that can be adapted to a wide range of different types of ground for protection of stabilization purposes. Its interlocking system makes installation and removal quick and easy, with no tools or adhesives required, thus reducing downtime.

Technical Data Sheet	Standards	Module Board X27 Recycled	Module Board X40 Recycled	Module Board DRAINAGE Recycled
Thickness	EN 4282	27mm	40mm	27mm 40mm
Diameter of surface circles		20 mm and 8 mm 	28 mm 	20mm (diameter of drain openings : 20mm) 
Dimensions (mm)	EN 426	1000 x 685mm (0.685 m <sup>2</sup> )	1000 x 685mm (0.685 m <sup>2</sup> )	1000 x 685mm (0.685 m <sup>2</sup> )
Article code		MBOA27	MBOA40	MBOA27-DR MBOA40-DR
Weight	EN 430	24.8kg/m <sup>2</sup> (17kg/tile)	36.5kg/m <sup>2</sup> (25kg/tile)	24kg/m <sup>2</sup> (16.5 kg/tile) 36.5kg/m <sup>2</sup> (25kg/tile)
Maximum resistance *		up to 20t./m <sup>2</sup>	up to 40t./m <sup>2</sup>	up to 15t./m <sup>2</sup> up to 35t./m <sup>2</sup>
Fire resistance	NF EN 9239-1 NF EN 11925-2	Good fire resistance	Good fire resistance	Good fire resistance
Colours		Black	Black	Black

\* Maximum resistance is indicative and not contractual.  
Due to the recycling process, differences in colour and texture may appear, as well as small white spots. Dimensional variations (+/-3%) are also possible.

